

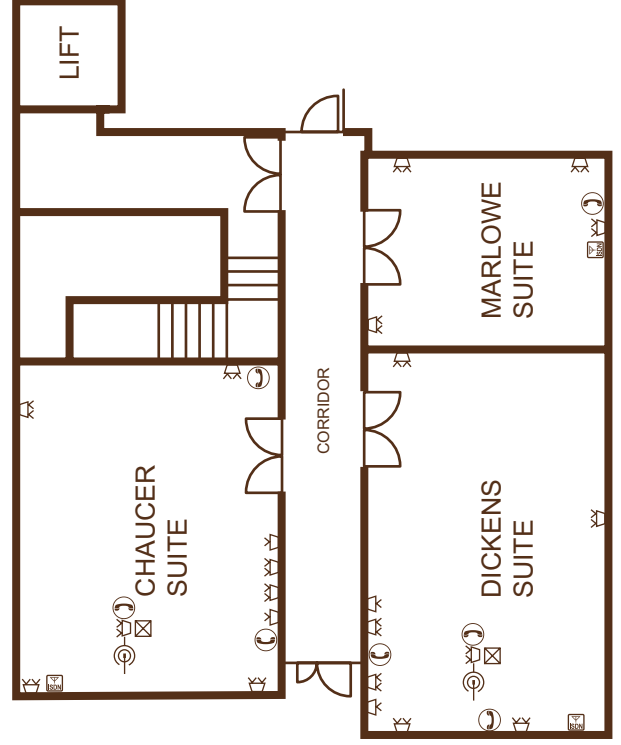
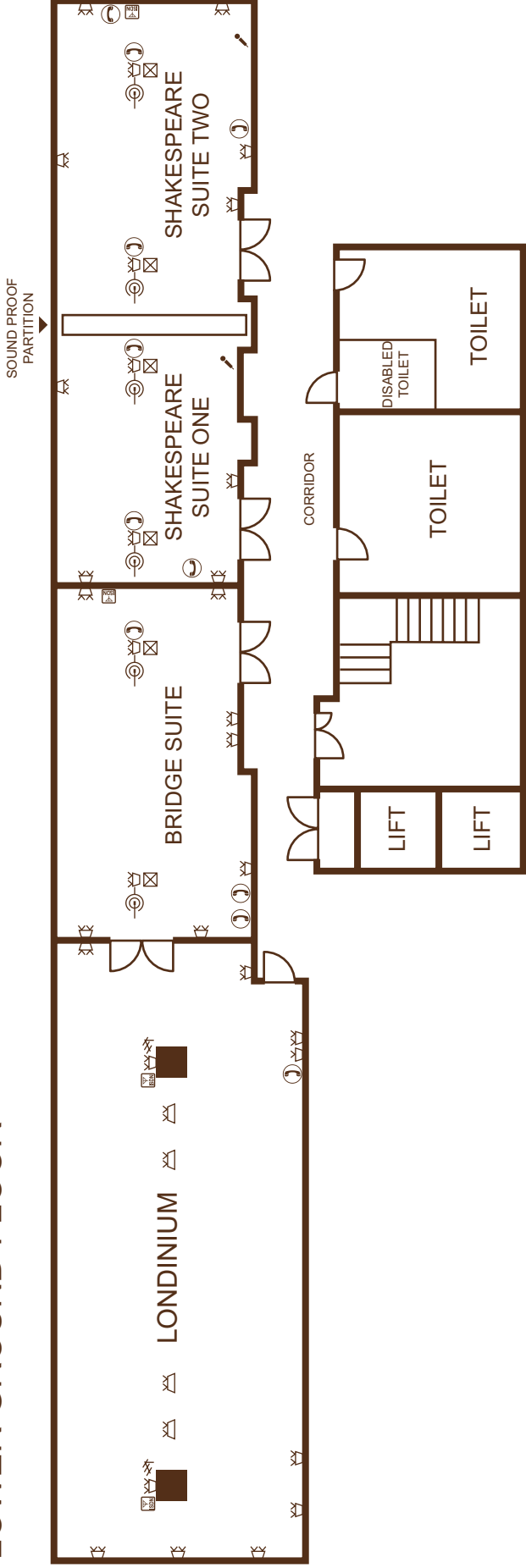
MEETING ROOM TECHNICAL INFORMATION

LONDON BRIDGE HOTEL

MEETING ROOM	SHAKESPEARE SUITE	SHAKESPEARE ONE	SHAKESPEARE TWO	DICKENS SUITE	CHAUCER SUITE	MARLOWE SUITE	BRIDGE SUITE	LONDINIUM
CAPACITIES								
THEATRE	80	30	30	18	15		35	
CLASSROOM	36	15	15	12	10		21	
BOARDROOM	36	14	16	16	12	6	20	
U-SHAPE	36	12	12	12	12		20	
CABARET	42	12	12	12	12		20	
BANQUETING	40	16	18				20	80
RECEPTION	80	30	30				45	120
DIMENSIONS								
LENGTH								
FEET	47'10"	23'10"	23'10"	24'6"	20'6"	14'2"	29'7"	52'2"
(METRES)	(14.58)	(7.26)	(7.26)	(7.47)	(6.25)	(4.32)	(9.02)	(15.90)
WIDTH								
FEET	15'3"	15'3"	15'3"	13'6"	14'0"	12'6"	16'3"	21'2"
(METRES)	(4.65)	(4.65)	(4.65)	(4.15)	(4.27)	(3.82)	(4.96)	(6.45)
AREA								
SQ FT	730.00	363.00	363.00	331.00	287.00	177.00	481.00	1104.00
(SQ M)	(67.79)	(33.75)	(33.75)	(31.00)	(26.68)	(16.50)	(44.73)	(102.55)
HEIGHT (MAXIMUM)								
FEET	8'10"	8'10"	8'10"	7'5"	7'5"	7'5"	8'8"	8'8"
(METRES)	(2.69)	(2.69)	(2.69)	(2.26)	(2.26)	(2.26)	(2.64)	(2.64)
HEIGHT (MINIMUM)								
FEET	7'3"	7'3"	7'3"	7'3"	7'3"	7'4"	8'2"	8'2"
(METRES)	(2.21)	(2.21)	(2.21)	(2.21)	(2.21)	(2.23)	(2.50)	(2.50)
DOOR HEIGHT								
FEET	6'8"	6'8"	6'8"	6'8"	6'8"	6'8"	6'8"	6'8"
(METRES)	(2.04)	(2.04)	(2.04)	(2.04)	(2.04)	(2.04)	(2.04)	(2.04)
DOOR WIDTH								
FEET	5'3"	5'3"	5'3"	5'3"	5'3"	5'3"	5'3"	5'3"
(METRES)	(1.61)	(1.61)	(1.61)	(1.61)	(1.61)	(1.61)	(1.61)	(1.61)
TECHNICAL INFORMATION								
AIR CONDITIONING CONTROLS	YES	YES	YES	YES	YES	YES	YES	YES
PROGRAMMABLE LIGHTING	YES	YES	YES	YES	YES	YES	YES	YES
HIGH SPEED INTERNET ACCESS (WIFI & WIRED)	YES	YES	YES	YES	YES	YES	YES	YES
LCD PROJECTOR	YES	YES	YES	YES	YES	YES	YES	N/A
PROJECTOR SCREEN BUILT IN	YES	YES	YES	O/R	O/R	NO	YES	NO
LCD FLAT SCREEN TELEVISION	YES	YES	YES	YES	YES	YES	YES	NO
CD, DVD & VCR IN ROOM	YES	YES	YES	N/A	N/A	N/A	YES	N/A
PA SYSTEM	YES	YES	YES	N/A	N/A	N/A	N/A	N/A
ISDN LINES	YES	YES	YES	YES	YES	YES	YES	YES
BLACK OUT	YES	YES	YES	YES	YES	YES	YES	YES
TELEPHONE POINTS	4	2	2	3	3	1	2	1
13 AMP SOCKETS	26	12	14	16	18	6	14	24
INDUCTION LOOP	YES	YES	YES	N/A	N/A	N/A	N/A	N/A

O/R = ON REQUEST N/A = NOT APPLICABLE

LOWER GROUND FLOOR



BASEMENT

	FLOOR TWIN 13 AMP SOCKET
	SINGLE 13 AMP SOCKET
	TWIN 13 AMP SOCKET
	PHONE
	ISDN
	ARIEL
	FLOOR BOX
	DATA / AUDIO
	PA SYSTEM